



NRBF-2 Polyclonal Antibody

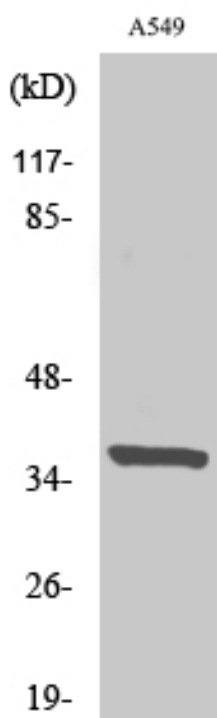
Catalog No	YP-Ab-00706
Isotype	IgG
Reactivity	Human;Mouse;Rat
Applications	WB;ELISA
Gene Name	NRBF2
Protein Name	Nuclear receptor-binding factor 2
Immunogen	The antiserum was produced against synthesized peptide derived from human NRBF2. AA range:140-189
Specificity	NRBF-2 Polyclonal Antibody detects endogenous levels of NRBF-2 protein.
Formulation	Liquid in PBS containing 50% glycerol, 0.5% BSA and 0.02% sodium azide.
Source	Polyclonal, Rabbit,IgG
Purification	The antibody was affinity-purified from rabbit antiserum by affinity-chromatography using epitope-specific immunogen.
Dilution	Western Blot: 1/500 - 1/2000. ELISA: 1/20000. Not yet tested in other applications.
Concentration	1 mg/ml
Purity	≥90%
Storage Stability	-20°C/1 year
Synonyms	NRBF2; COPR; Nuclear receptor-binding factor 2; NRBF-2; Comodulator of PPAR and RXR
Observed Band	36kD
Cell Pathway	Nucleus . Cytoplasm . Cytoplasmic vesicle . Cytoplasmic vesicle, autophagosome .
Tissue Specificity	Detected in keratinocytes, liver and placenta (PubMed:15610520). Expressed in a subset of cells in pediatric medulloblastoma (PubMed:18619852).
Function	function:May modulate transcriptional activation by target nuclear receptors. Can act as transcriptional activator (in vitro).,subunit:Interacts with PPARA, PPARD and PPARG. Interacts with RARA, RARG and RXRA in the presence of bound ligand.,tissue specificity:Detected in keratinocytes, liver and placenta.,
Background	function:May modulate transcriptional activation by target nuclear receptors. Can act as transcriptional activator (in vitro).,subunit:Interacts with PPARA, PPARD and PPARG. Interacts with RARA, RARG and RXRA in the presence of bound ligand.,tissue specificity:Detected in keratinocytes, liver and placenta.,
matters needing attention	Avoid repeated freezing and thawing!



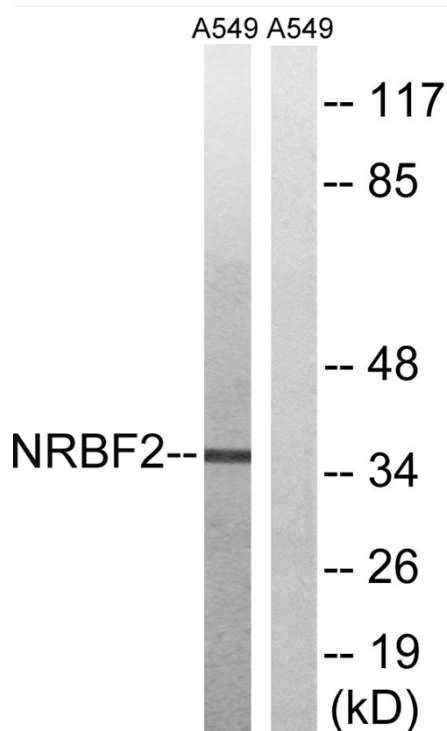
Usage suggestions

This product can be used in immunological reaction related experiments. For more information, please consult technical personnel.

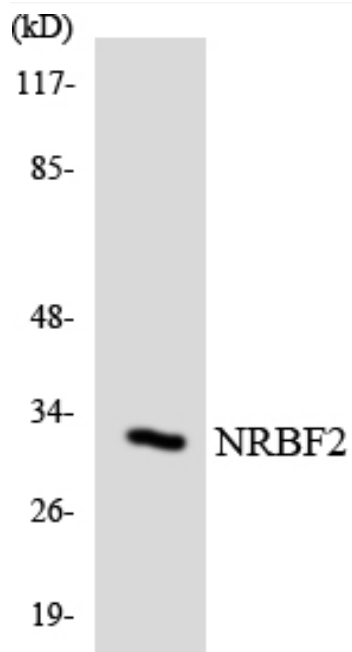
Products Images



Western Blot analysis of various cells using NRBF-2 Polyclonal Antibody



Western blot analysis of lysates from A549 cells, using NRBF2 Antibody. The lane on the right is blocked with the synthesized peptide.



Western blot analysis of the lysates from RAW264.7 cells using NRBF2 antibody.